

2022.3.16~31 42feet



Oil Pattern Distance: 42 Feet **Reverse Brush Drop:** 38 Feet **Oil Per Board:** 50 uL
Forward Oil Total: 14.35 mL **Reverse Oil Total:** 5.25 mL **Volume Oil Total:** 19.6 mL
Forward Boards Crossed: 287 Boards **Reverse Boards Crossed:** 105 Boards **Total Boards Crossed:** 392 Boards

	Start	Stop	Loads	Speed	Crossed	Start	End	Feet	T.Oil
1	2L	2R	2	14	74	0.0	1.9	1.9	3700
2	6L	6R	1	14	29	1.9	3.8	1.9	1450
3	7L	7R	2	14	54	3.8	7.7	3.9	2700
4	8L	8R	1	18	25	7.7	10.2	2.5	1250
5	9L	9R	1	18	23	10.2	12.7	2.5	1150
6	10L	10R	3	18	63	12.7	20.3	7.6	3150
7	11L	11R	1	18	19	20.3	22.8	2.5	950
8	2L	2R	0	30	0	22.8	42.0	19.2	0

◀ ▶ ▶ ▶ Forward Reverse More

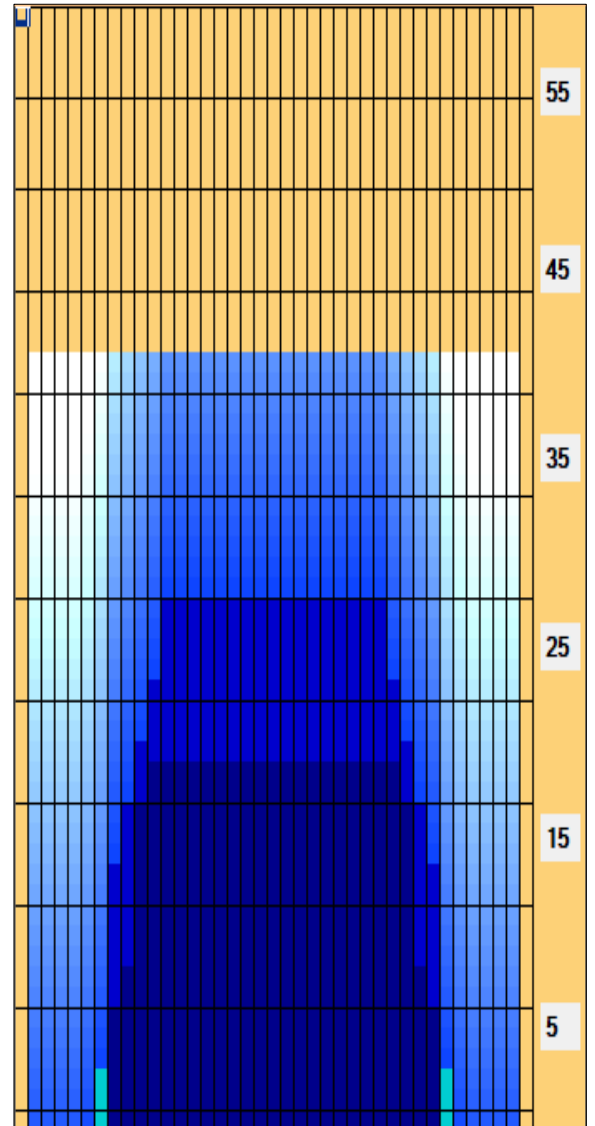
	Start	Stop	Loads	Speed	Crossed	Start	End	Feet	T.Oil
1	2L	2R	0	30	0	42.0	30.0	-12.0	0
2	12L	12R	1	26	17	30.0	26.4	-3.6	850
3	11L	11R	1	26	19	26.4	22.8	-3.6	950
4	10L	10R	1	22	21	22.8	19.7	-3.1	1050
5	9L	9R	1	18	23	19.7	17.2	-2.5	1150
6	8L	8R	1	18	25	17.2	14.7	-2.5	1250
7	2L	2R	0	14	0	14.7	0.0	-14.7	0

◀ ▶ ▶ ▶ Forward Reverse More

Conditioner:
 Type In or Select One

 TransferType:
 Type In or Select One

- Forward
- Reverse
- Combined
- Buff



Item Description	3L-7L:18L-18R Outside Track:Middle	8L-12L:18L-18R Middle Track:Middle	13L-17L:18L-18R Inside Track:Middle	18L-18R:17R-13R Middle: Inside Track	18L-18R:12R-8R Middle:Middle Track	18L-18R:7R-3R Middle:Outside Track
Track Zone Ratio	5.71	1.33	1	1	1.33	5.71

