

# 2023.3.16~31 42feet



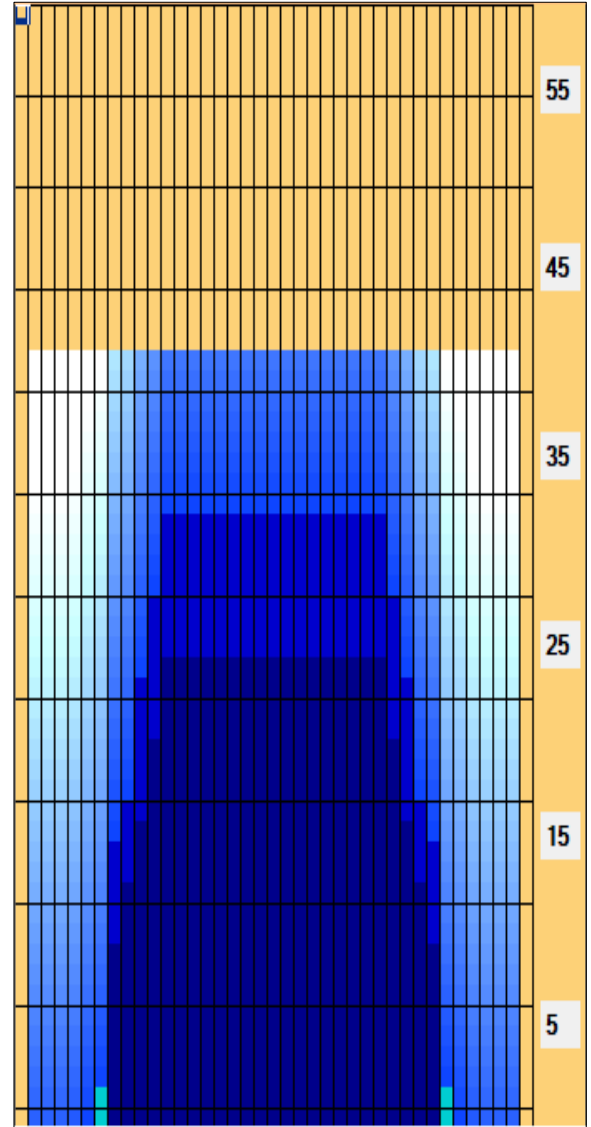
**Oil Pattern Distance:** 42 Feet      **Reverse Brush Drop:** 36 Feet      **Oil Per Board:** 50 uL  
**Forward Oil Total:** 12.7 mL      **Reverse Oil Total:** 6.3 mL      **Volume Oil Total:** 19 mL  
**Forward Boards Crossed:** 254 Boards      **Reverse Boards Crossed:** 126 Boards      **Total Boards Crossed:** 380 Boards

	Start	Stop	Loads	Speed	Crossed	Start	End	Feet	T.Oil
1	2L	2R	1	14	37	0.0	0.0	0.0	1850
2	5L	5R	1	14	31	0.0	1.9	1.9	1550
3	6L	6R	1	18	29	1.9	4.4	2.5	1450
4	7L	7R	1	18	27	4.4	6.9	2.5	1350
5	8L	8R	2	22	50	6.9	13.1	6.2	2500
6	9L	9R	1	22	23	13.1	16.2	3.1	1150
7	10L	10R	1	26	21	16.2	19.8	3.6	1050
8	11L	11R	1	26	19	19.8	23.4	3.6	950
9	12L	12R	1	26	17	23.4	27.0	3.6	850
10	2L	2R	0	30	0	27.0	42.0	15.0	0

	Start	Stop	Loads	Speed	Crossed	Start	End	Feet	T.Oil
1	2L	2R	0	30	0	42.0	34.0	-8.0	0
2	12L	12R	1	30	17	34.0	29.8	-4.2	850
3	11L	11R	1	26	19	29.8	26.2	-3.6	950
4	10L	10R	2	22	42	26.2	20.0	-6.2	2100
5	9L	9R	1	18	23	20.0	17.5	-2.5	1150
6	8L	8R	1	14	25	17.5	15.6	-1.9	1250
7	2L	2R	0	14	0	15.6	0.0	-15.6	0

Conditioner:  
 Type In or Select One  
  
 TransferType:  
 Type In or Select One

- Forward
- Reverse
- Combined
- Buff



Item Description	3L-7L:18L-18R Outside Track:Middle	8L-12L:18L-18R Middle Track:Middle	13L-17L:18L-18R Inside Track:Middle	18L-18R:17R-13R Middle: Inside Track	18L-18R:12R-8R Middle:Middle Track	18L-18R:7R-3R Middle:Outside Track
Track Zone Ratio	7.27	1.38	1	1	1.38	7.27

