

2023.9.1 ~ 9.15 41feet



Oil Pattern Distance: **41 Feet**
 Forward Oil Total: **10.95 mL**
 Forward Boards Crossed: **219 Boards**

Reverse Brush Drop: **34 Feet**
 Reverse Oil Total: **8.65 mL**
 Reverse Boards Crossed: **173 Boards**

Oil Per Board: **50 uL**
 Volume Oil Total: **19.6 mL**
 Total Boards Crossed: **392 Boards**

	Start	Stop	Loads	Speed	Crossed	Start	End	Feet	T.Oil
1	2L	2R	1	14	37	0.0	0.0	0.0	1850
2	8L	8R	2	14	50	0.0	3.9	3.9	2500
3	10L	10R	2	18	42	3.9	9.0	5.1	2100
4	12L	12R	2	22	34	9.0	15.2	6.2	1700
5	13L	13R	2	22	30	15.2	21.4	6.2	1500
6	14L	14R	2	26	26	21.4	28.7	7.3	1300
7	2L	2R	0	26	0	28.7	41.0	12.3	0

Navigation: Forward Reverse More

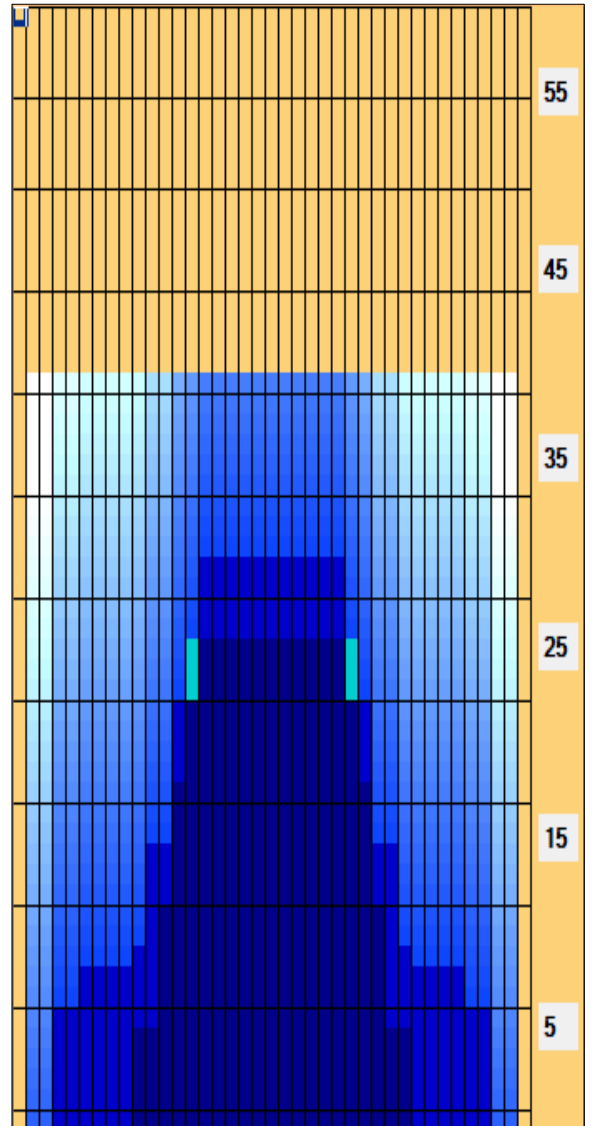
	Start	Stop	Loads	Speed	Crossed	Start	End	Feet	T.Oil
1	2L	2R	0	30	0	41.0	32.0	-9.0	0
2	15L	15R	2	26	22	32.0	24.7	-7.3	1100
3	13L	13R	2	22	30	24.7	18.5	-6.2	1500
4	11L	11R	2	18	38	18.5	13.4	-5.1	1900
5	10L	10R	1	14	21	13.4	11.5	-1.9	1050
6	6L	6R	1	14	29	11.5	9.6	-1.9	1450
7	4L	4R	1	14	33	9.6	7.7	-1.9	1650
8	2L	2R	0	14	0	7.7	0.0	-7.7	0

Navigation: Forward Reverse More

Conditioner:
Type In or Select One

TransferType:
Type In or Select One

- Forward
- Reverse
- Combined
- Buff



Item Description	3L-7L:18L-18R Outside Track:Middle	8L-12L:18L-18R Middle Track:Middle	13L-17L:18L-18R Inside Track:Middle	18L-18R:17R-13R Middle: Inside Track	18L-18R:12R-8R Middle:Middle Track	18L-18R:7R-3R Middle:Outside Track
Track Zone Ratio	9.09	2.5	1.06	1.06	2.5	9.09

