

2026.4.16~4.30 43feet



Oil Pattern Distance: 43 Feet **Reverse Brush Drop:** 36 Feet **Oil Per Board:** 50 uL
Forward Oil Total: 12.2 mL **Reverse Oil Total:** 6.95 mL **Volume Oil Total:** 19.15 mL
Forward Boards Crossed: 244 Boards **Reverse Boards Crossed:** 139 Boards **Total Boards Crossed:** 383 Boards

	Start	Stop	Loads	Speed	Crossed	Start	End	Feet	T.Oil
1	2L	2R	1	14	37	0.0	0.0	0.0	1850
2	6L	6R	1	14	29	0.0	1.9	1.9	1450
3	7L	7R	2	18	54	1.9	7.0	5.1	2700
4	8L	8R	1	18	25	7.0	9.5	2.5	1250
5	9L	9R	2	18	46	9.5	14.6	5.1	2300
6	11L	11R	1	22	19	14.6	17.7	3.1	950
7	12L	12R	2	26	34	17.7	25.0	7.3	1700
8	2L	2R	0	30	0	25.0	43.0	18.0	0

◀ ▶ ▶▶ Forward Reverse More

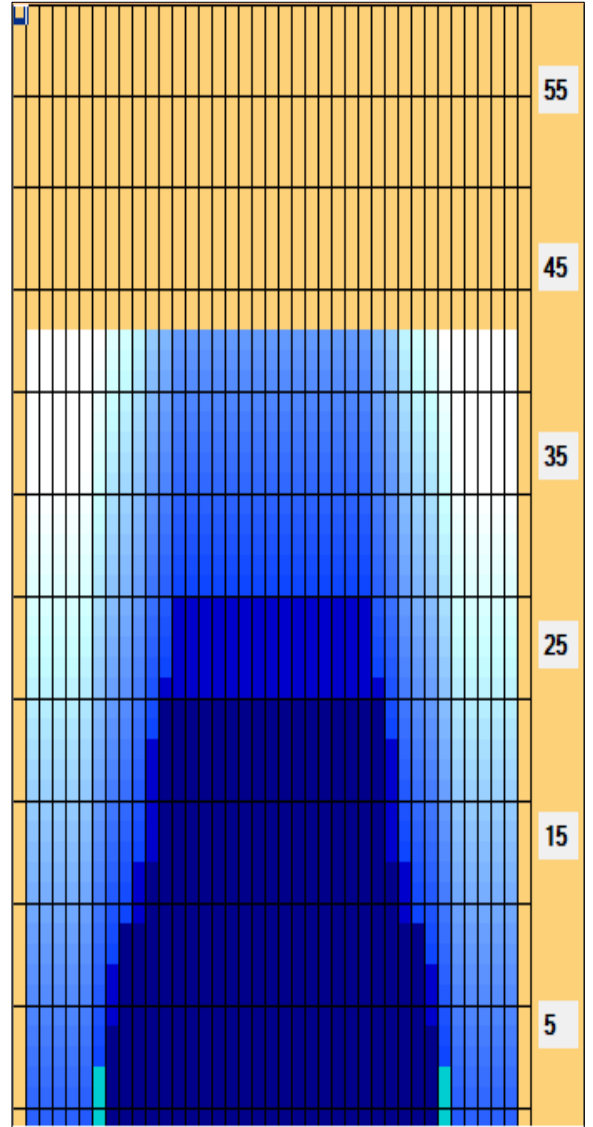
	Start	Stop	Loads	Speed	Crossed	Start	End	Feet	T.Oil
1	2L	2R	0	30	0	43.0	30.0	-13.0	0
2	13L	13R	1	26	15	30.0	26.4	-3.6	750
3	12L	12R	1	26	17	26.4	22.8	-3.6	850
4	11L	11R	2	22	38	22.8	16.6	-6.2	1900
5	10L	10R	1	18	21	16.6	14.1	-2.5	1050
6	9L	9R	1	18	23	14.1	11.6	-2.5	1150
7	8L	8R	1	14	25	11.6	9.7	-1.9	1250
8	2L	2R	0	14	0	9.7	0.0	-9.7	0

◀ ▶ ▶▶ Forward Reverse More

Conditioner:
 Type In or Select One

 TransferType:
 Type In or Select One

- Forward
- Reverse
- Combined
- Buff



Item Description	3L-7L:18L-18R Outside Track:Middle	8L-12L:18L-18R Middle Track:Middle	13L-17L:18L-18R Inside Track:Middle	18L-18R:17R-13R Middle: Inside Track	18L-18R:12R-8R Middle:Middle Track	18L-18R:7R-3R Middle:Outside Track
Track Zone Ratio	9.44	1.57	1	1	1.57	9.44

