

# 2024.1.16~31 42feet



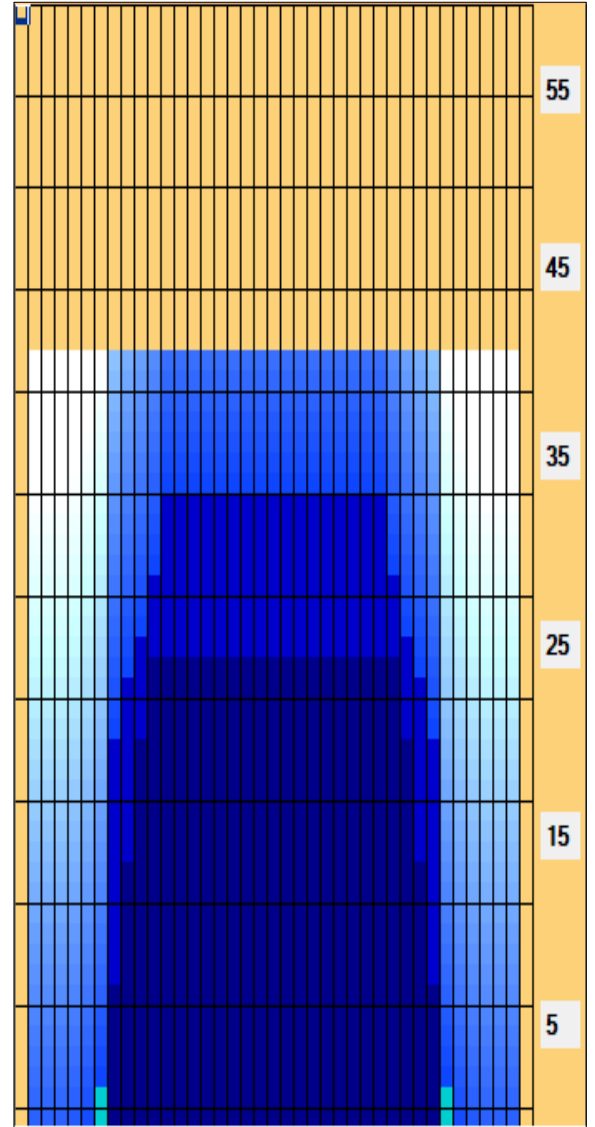
**Oil Pattern Distance:** 42 Feet      **Reverse Brush Drop:** 38 Feet      **Oil Per Board:** 50 uL  
**Forward Oil Total:** 14.05 mL      **Reverse Oil Total:** 5.25 mL      **Volume Oil Total:** 19.3 mL  
**Forward Boards Crossed:** 281 Boards      **Reverse Boards Crossed:** 105 Boards      **Total Boards Crossed:** 386 Boards

	Start	Stop	Loads	Speed	Crossed	Start	End	Feet	T.Oil
1	2L	2R	1	10	37	0.0	0.0	0.0	1850
2	5L	5R	1	14	31	0.0	1.9	1.9	1550
3	6L	6R	1	14	29	1.9	3.8	1.9	1450
4	7L	7R	1	18	27	3.8	6.3	2.5	1350
5	8L	8R	2	18	50	6.3	11.4	5.1	2500
6	9L	9R	2	22	46	11.4	17.6	6.2	2300
7	10L	10R	2	22	42	17.6	23.8	6.2	2100
8	11L	11R	1	26	19	23.8	27.4	3.6	950
9	2L	2R	0	30	0	27.4	42.0	14.6	0

	Start	Stop	Loads	Speed	Crossed	Start	End	Feet	T.Oil
1	2L	2R	0	30	0	42.0	35.0	-7.0	0
2	12L	12R	1	26	17	35.0	31.4	-3.6	850
3	11L	11R	1	22	19	31.4	28.3	-3.1	950
4	10L	10R	1	18	21	28.3	25.8	-2.5	1050
5	9L	9R	1	18	23	25.8	23.3	-2.5	1150
6	8L	8R	1	14	25	23.3	21.4	-1.9	1250
7	2L	2R	0	14	0	21.4	0.0	-21.4	0

Conditioner:  
 Type In or Select One  
 TransferType:  
 Type In or Select One

- Forward
- Reverse
- Combined
- Buff



Item Description	3L-7L:18L-18R Outside Track:Middle	8L-12L:18L-18R Middle Track:Middle	13L-17L:18L-18R Inside Track:Middle	18L-18R:17R-13R Middle: Inside Track	18L-18R:12R-8R Middle:Middle Track	18L-18R:7R-3R Middle:Outside Track
Track Zone Ratio	7.27	1.31	1	1	1.31	7.27

