

# 2024.4.16~30 43feet



Oil Pattern Distance: **43 Feet**  
 Forward Oil Total: **15.1 mL**  
 Forward Boards Crossed: **302 Boards**

Reverse Brush Drop: **34 Feet**  
 Reverse Oil Total: **4.3 mL**  
 Reverse Boards Crossed: **86 Boards**

Oil Per Board: **50 uL**  
 Volume Oil Total: **19.4 mL**  
 Total Boards Crossed: **388 Boards**

	Start	Stop	Loads	Speed	Crossed	Start	End	Feet	T.Oil
1	2L	2R	1	10	37	0.0	0.0	0.0	1850
2	5L	5R	1	14	31	0.0	1.9	1.9	1550
3	6L	6R	1	18	29	1.9	4.4	2.5	1450
4	7L	7R	2	22	54	4.4	10.6	6.2	2700
5	8L	8R	1	22	25	10.6	13.7	3.1	1250
6	9L	9R	2	22	46	13.7	19.9	6.2	2300
7	10L	10R	2	26	42	19.9	27.2	7.3	2100
8	11L	11R	2	26	38	27.2	34.5	7.3	1900
9	2L	2R	0	30	0	34.5	43.0	8.5	0

Navigation: Forward Reverse More

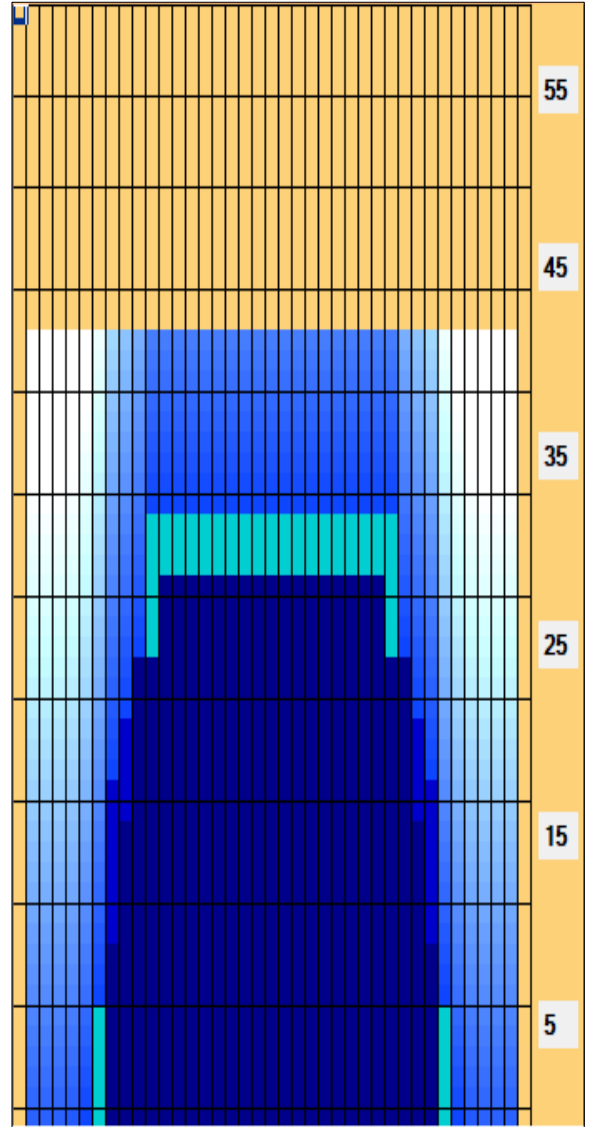
	Start	Stop	Loads	Speed	Crossed	Start	End	Feet	T.Oil
1	2L	2R	0	30	0	43.0	31.0	-12.0	0
2	12L	12R	1	26	17	31.0	27.4	-3.6	850
3	10L	10R	1	22	21	27.4	24.3	-3.1	1050
4	9L	9R	1	22	23	24.3	21.2	-3.1	1150
5	8L	8R	1	18	25	21.2	18.7	-2.5	1250
6	2L	2R	0	14	0	18.7	0.0	-18.7	0

Navigation: Forward Reverse More

Conditioner:  
Type In or Select One

TransferType:  
Type In or Select One

- Forward
- Reverse
- Combined
- Buff



Item Description	3L-7L:18L-18R Outside Track:Middle	8L-12L:18L-18R Middle Track:Middle	13L-17L:18L-18R Inside Track:Middle	18L-18R:17R-13R Middle: Inside Track	18L-18R:12R-8R Middle:Middle Track	18L-18R:7R-3R Middle:Outside Track
Track Zone Ratio	6.67	1.31	1	1	1.31	6.67

