

# 2025.6.16~30 45feet



Oil Pattern Distance: **45 Feet**  
 Forward Oil Total: **13.35 mL**  
 Forward Boards Crossed: **267 Boards**

Reverse Brush Drop: **35 Feet**  
 Reverse Oil Total: **6.2 mL**  
 Reverse Boards Crossed: **124 Boards**

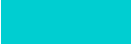
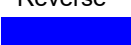
Oil Per Board: **50 uL**  
 Volume Oil Total: **19.55 mL**  
 Total Boards Crossed: **391 Boards**

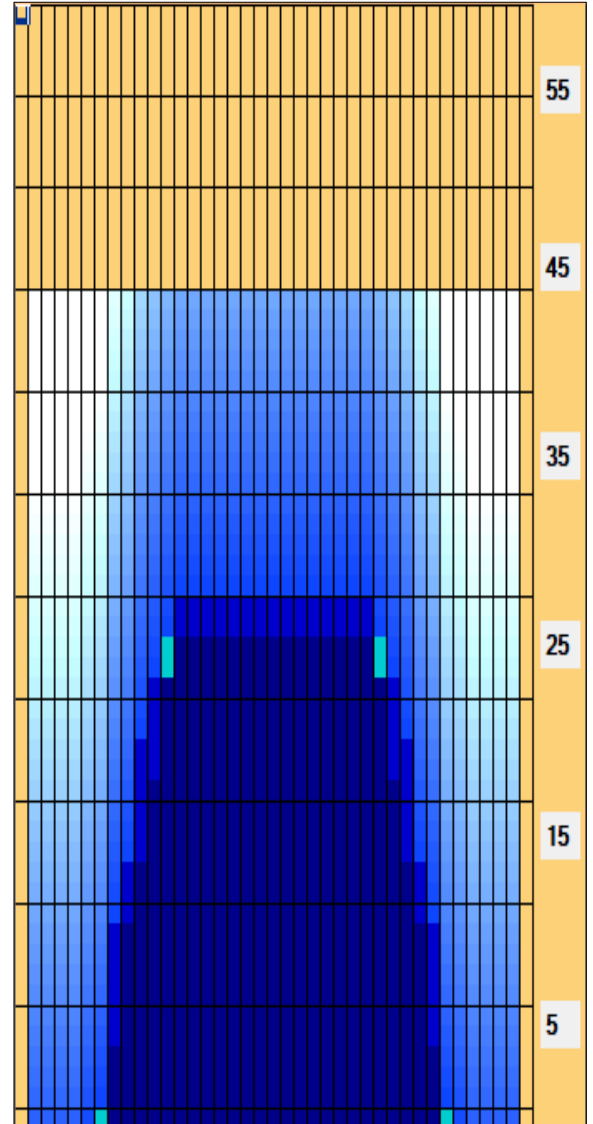
	Start	Stop	Loads	Speed	Crossed	Start	End	Feet	T.Oil
1	2L	2R	1	10	37	0.0	0.0	0.0	1850
2	6L	6R	2	14	58	0.0	3.9	3.9	2900
3	7L	7R	1	14	27	3.9	5.8	1.9	1350
4	8L	8R	1	18	25	5.8	8.3	2.5	1250
5	9L	9R	2	22	46	8.3	14.5	6.2	2300
6	10L	10R	1	22	21	14.5	17.6	3.1	1050
7	11L	11R	1	26	19	17.6	21.2	3.6	950
8	12L	12R	2	26	34	21.2	28.5	7.3	1700
9	2L	2R	0	30	0	28.5	45.0	16.5	0

	Start	Stop	Loads	Speed	Crossed	Start	End	Feet	T.Oil
1	2L	2R	0	30	0	45.0	30.0	-15.0	0
2	13L	13R	1	26	15	30.0	26.4	-3.6	750
3	11L	11R	1	26	19	26.4	22.8	-3.6	950
4	10L	10R	2	22	42	22.8	16.6	-6.2	2100
5	9L	9R	1	18	23	16.6	14.1	-2.5	1150
6	8L	8R	1	14	25	14.1	12.2	-1.9	1250
7	2L	2R	0	14	0	12.2	0.0	-12.2	0

Conditioner:  
Type In or Select One

TransferType:  
Type In or Select One

Forward  
  
 Reverse  
  
 Combined  
  
 Buff  

Item Description	3L-7L:18L-18R Outside Track:Middle	8L-12L:18L-18R Middle Track:Middle	13L-17L:18L-18R Inside Track:Middle	18L-18R:17R-13R Middle: Inside Track	18L-18R:12R-8R Middle:Middle Track	18L-18R:7R-3R Middle:Outside Track
Track Zone Ratio	8.5	1.49	1	1	1.49	8.5

